



# Salmon and Steelhead



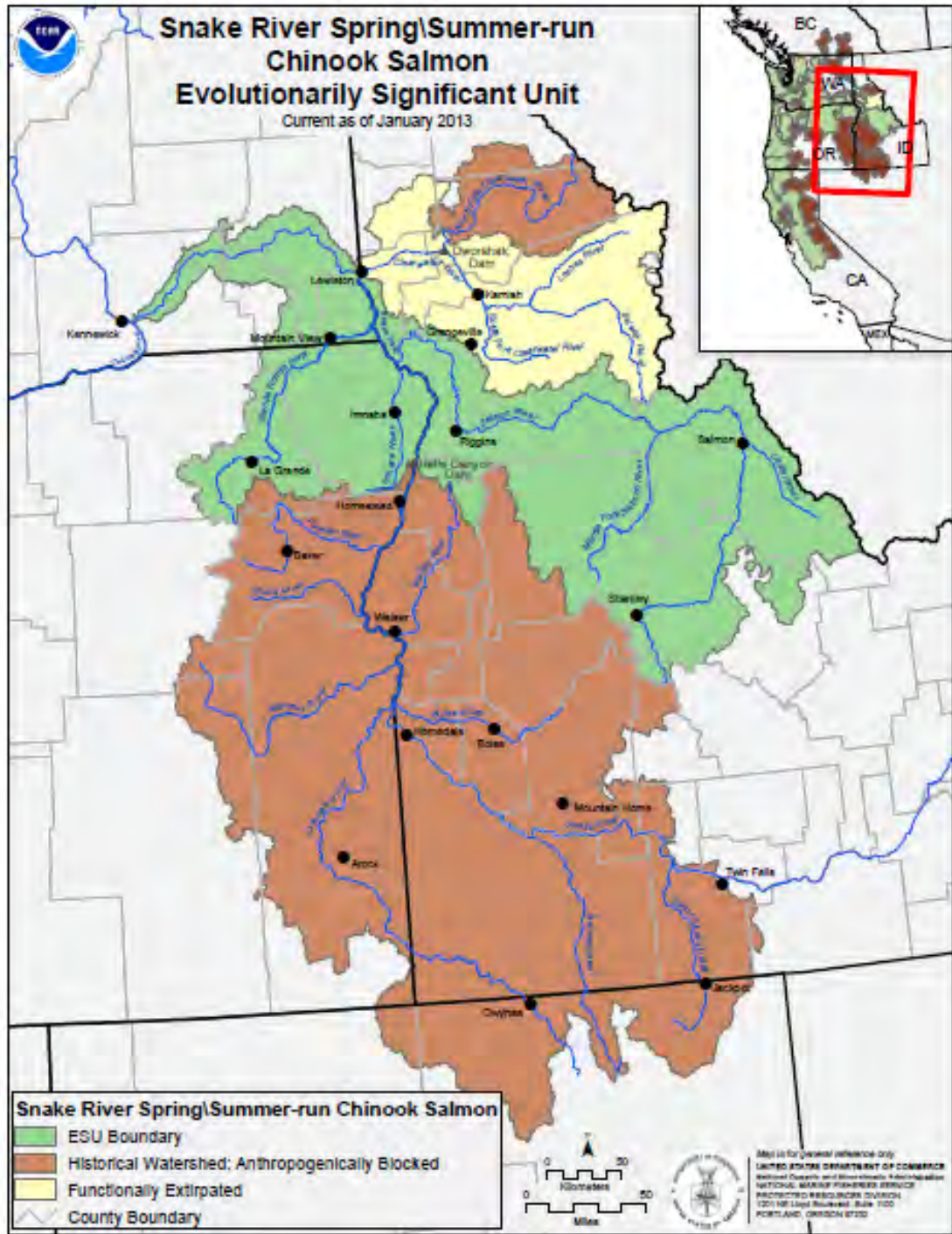






# Snake River Spring/Summer-run Chinook Salmon Evolutionarily Significant Unit

Current as of January 2013



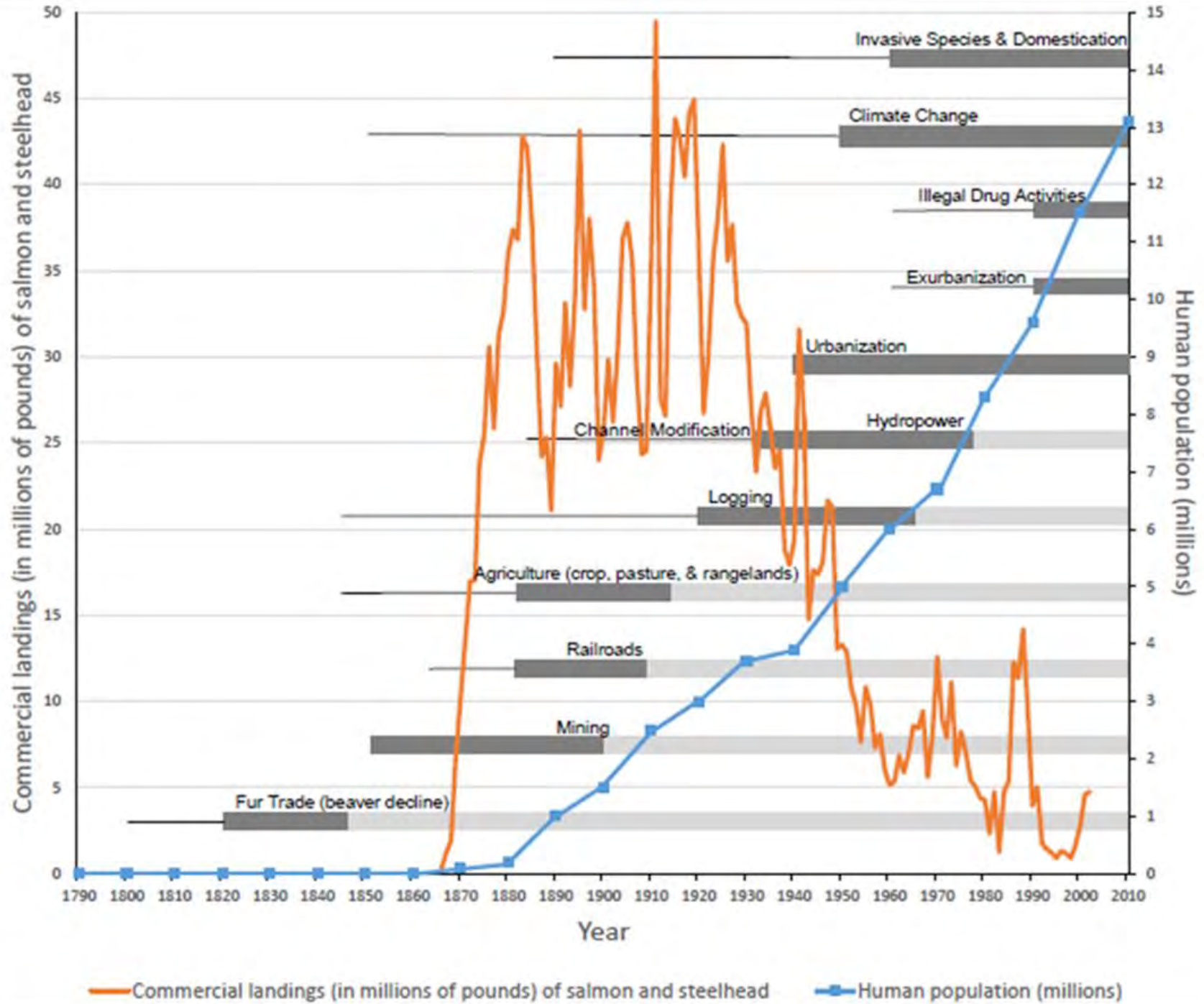
**Snake River Spring/Summer-run Chinook Salmon**

- ESU Boundary
- Historical Watershed: Anthropogenically Blocked
- Functionally Extirpated
- County Boundary

0 50  
Kilometers

0 50  
Miles

Map is for general reference only.  
 UNITED STATES DEPARTMENT OF COMMERCE  
 NATIONAL MARINE FISHERIES SERVICE  
 PACIFIC REGIONAL OFFICE  
 1201 NE LIQUOR LAKE  
 PORTLAND, OREGON 97232



# History of Humans and Salmon



















## Upper Salmon Conservation Successes

---

Conservation easements – over  
30,000 acres

---

Riparian and river habitat restored  
and/or protected – 494 miles

---

Fish screens installed in irrigation  
diversions since 1993 – 249

---

Instream flow restored to rivers  
and creeks – over 60 cfs



